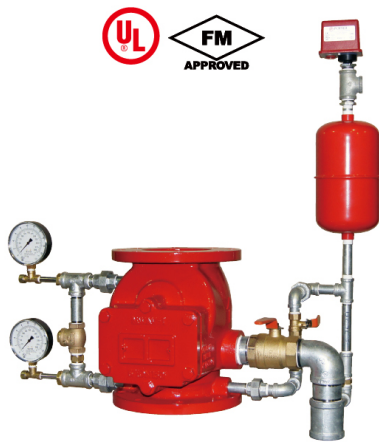


Alarm Check Valve



Model Name	MWAV-1			
Valve Size	2.5" (DN65)	3" (DN80)	4" (DN100)	6" (DN150)
Working Pressure	200psi (13.79bar)			
Test Pressure	400psi (27.58bar)			
Flange Type	ANSI B16.5 Class 150lbs			
Direction	Vertical			
Weight (Flanged ends)	13.1kg	14.7kg	16.7kg	28.2kg



Available with sight glass, relief valve, and butterfly valve.

Model Name	M-WAV								
Valve Size	2.5" (DN65)	3" (DN80)	4" (DN100)	5" (DN125)	6" (DN150)				
Working Pressure	1.4MPa (14bar)								
Test Pressure	2.1MPa (21bar)								
Connection Type*	FF	GG	FF	GG	FF	GG	FF	FF	GG
Direction	Vertical								
Weight	12kg	6kg	13kg	7kg	17kg	9kg	23kg	30kg	22kg

*Connection Type

FF = Flanged Ends with KS B 1511 FF 10K / GG = Grooved Ends with KS B 1507